

# XMC Carrier / Adapter

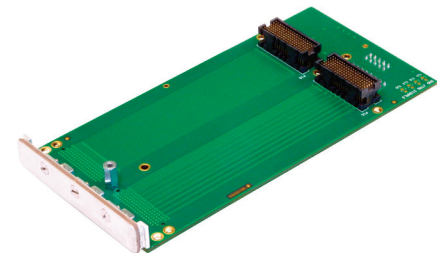
## Basic XMC to XMC Extender

This extender can be installed on an XMC site of a VME, cPCI, or other carrier board to allow the extension of an XMC module for test access. In addition to providing extension, the unit also elevates (by approximately 11 mm) the mounted XMC. Both P15 and P16 are supported.

The P15 to J15 traces are routed for PCI express signaling. P16 signals, however, are routed in a 1:1 fashion with the differential signals being routed with 100 ohms. Differential pairs are impedance controlled. To further assure signal integrity, the extender's voltage and ground planes have been carefully designed.

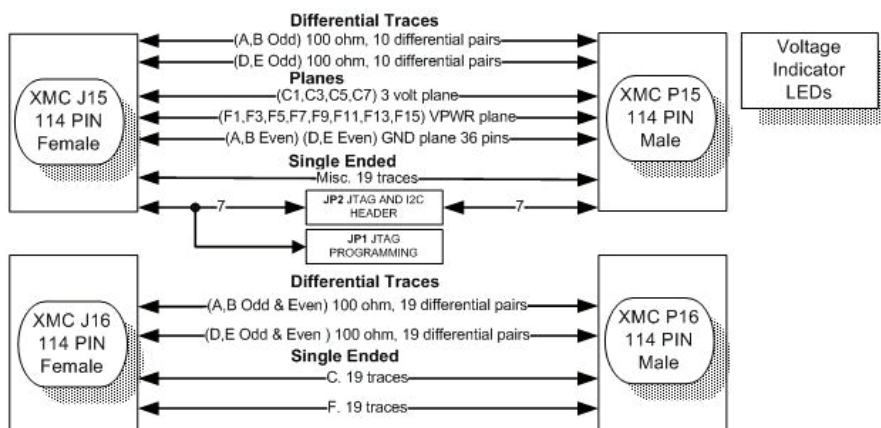
The extender features a pair of JTAG headers -- JP1 and JP2. The first is intended to accept connection of an Altera programmer. JP2 allows a user to access the JTAG and I2C signals for the carrier and mounted XMC. Shorting jumpers are provided to configure JP2 as necessary.

If the JTAG signals need to be pulled up or down, resistors can be installed to pull up +3.3 volts or pull down ground. (The resistors are not installed by Technobox.) On-board LEDs provide status of key voltage levels. Adjacent test pads can be used to check voltages.

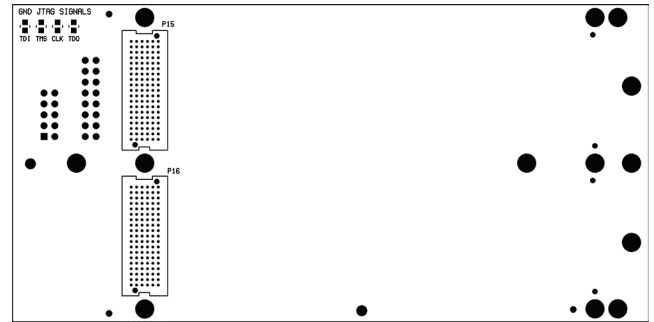
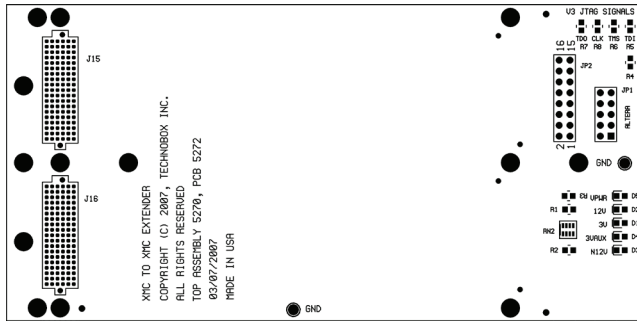


5270

- Extends an XMC for Testing / Debugging
- Supports both P15 and P16 XMC Connectors
- Carefully Designed to Preserve Signal Integrity
- Impedance-controlled Differential Pairs
- JTAG Support for Altera Programmer
- User-defined Levels for JTAG
- RoHS Compliant



**Technobox**



### Specifications

Temperature (Operating): -40 to 85 C  
 Temperature (Storage): -55 to +100 C  
 Altitude: Not specified or characterized (Typical similar equipment is at 15,000 ft.)  
 Humidity (Operating/Storage): 5% to 90% non-condensing  
 Vibration: Not specified or Characterized  
 MTBF: Can be provided upon request  
 Typical Power Dissipation: Per XMC under test; minimal demand for LEDs  
 Voltages Required: +3.3V, VPWR, +12V, -12V, +3.3V AUX

### Ordering Information

5270: XMC to XMC Extender - 4X

