

Network Adapter XMC

Single-port 10/100/1G Ethernet Adapter

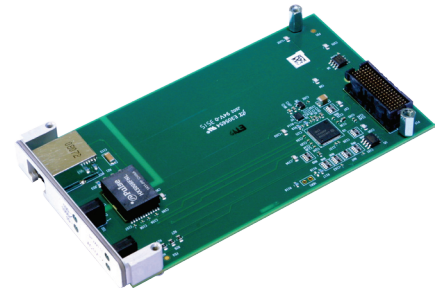
The Technobox 7259 Gigabit Ethernet XMC provides a single 10/100/1000 RJ45 Ethernet Port at the XMC front panel.

The design is based on an Intel i210 (specifically WGI210IT) controller integrated circuit. This is one of the few Ethernet controllers that is qualified for industrial temperature range operation (-40 to +85 C).

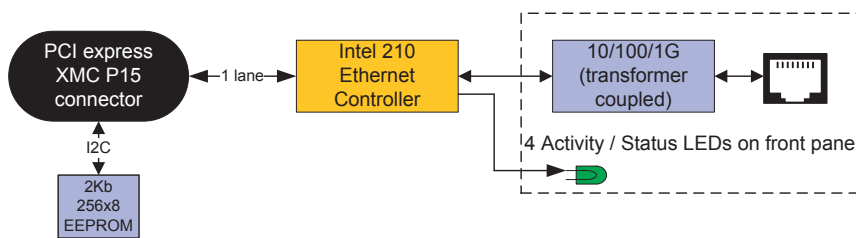
LEDs visible on the front panel convey power, activity, and speed (10/100/1000) status.

Standard operating systems, such as Linux and Windows, are supported.

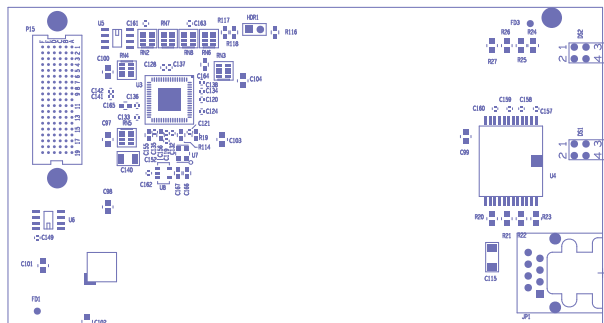
This product is built with industrial temperature range parts (-40 to +85 C) and is RoHS compliant.



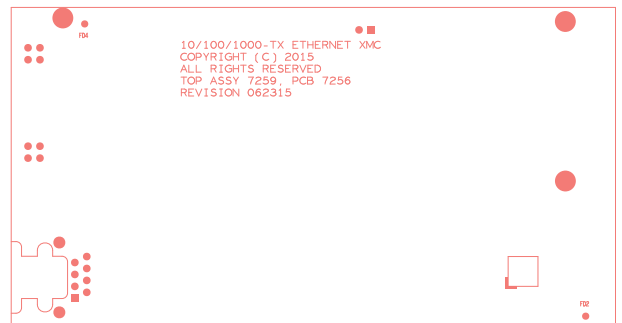
7259
.....



- One Intel WGI210IT 10/100/1000 controller
- 1x Gen 1 (2.5 Gb/s) PCIe connection
- RJ45 front panel connection
- Front panel status and activity LEDs
- Air-cooled XMC
- Powered only by XMC 3.3V rail
- Industrial temperature design
- RoHS compliant



Component Placement View - Side 1



Component Placement View - Side 2

Technobox

Specifications

Temperature (Operating): -40 to +85 degrees C

Temperature (Storage): -55 to +105 degrees C

Altitude: Not Specified or Characterized; typical similar equipment is at 15,000 ft.

Humidity(Operating/Storage): 5% to 95% non-condensing.

Vibration: Not specified or Characterized.

Shock: Not specified or Characterized.

MTBF: Can be calculated upon request

PCI Express: GEN-1 (2.5 Gb/s)

Voltages Required: +3.3V only

Power: 0.293 amp measured @ 3.3V

Size: 74 mm x 128.7 mm

PCB Thickness: 1.57mm / 0.062" +/-10% as per standard PCBs

Weight: 53 grams

Ordering Information

7259: Single 10/100/1G Ethernet out front panel. XMC 1-lane PCI Express. Based on Intel i210 MAC/PHY controller.



Copyright © Technobox 2017 DS7259-B70217
All other brands or names are property of their respective holders



Technobox, Inc.
154 Cooper Road
Suite 901
West Berlin, NJ 08091
Tel: 856-809-2306 • Fax: 856-809-2601
www.technobox.com info@technobox.com