

Network Adapter XMC

Single-port 10/100/1G Ethernet Adapter

The Technobox P/N 7259 Gigabit Ethernet XMC provides a single 10/100/1000 RJ45 Ethernet Port at the XMC front-panel.

The design is based on an Intel i210 (specifically WGI210IT) controller integrated circuit. This is one of the few Ethernet controllers that is qualified for industrial temperature range operation (-40 to +85 C). LEDs visible on the front panel convey power, activity, and speed (10/100/1000) status.

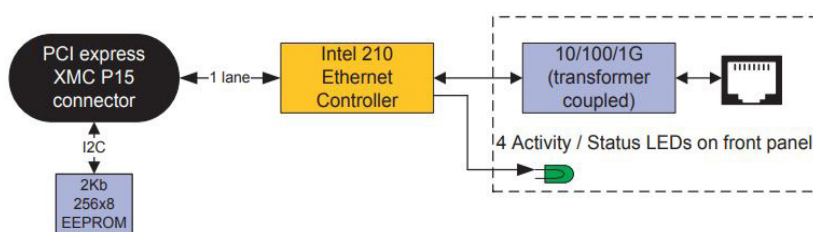
Standard operating systems, such as Linux and Windows, are supported.

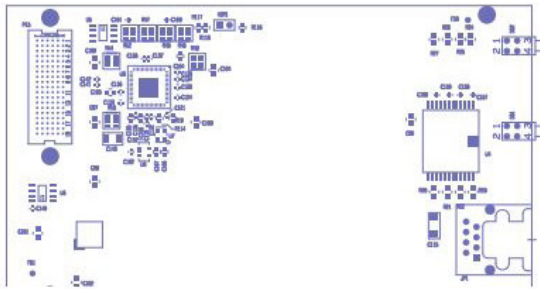
This product is built with industrial temperature range parts (-40 to +85 C) and is RoHS compliant.



7259

- One Intel WGI210IT 10/100/1000 Controller
- 1x Gen 1 (2.5 Gb/s) PCIe Connection
- RJ45 Front-Panel Connection
- Front-Panel Status & Activity LEDs
- Air-Cooled XMC
- Powered Only by XMC 3.3V Rail
- Industrial Temperature Design
- RoHS Compliant





COMPONENT PLACEMENT VIEW - SIDE #1



COMPONENT PLACEMENT VIEW - SIDE #2

SPECIFICATIONS

Temperature (Operating): -40 to +85 degrees C

Temperature (Storage): -55 to +105 degrees C

Altitude: Not specified or characterized. Typical similar equipment is at 15,000 ft.

Humidity (Operating/Storage): 5% to 95% non-condensing.

Vibration: Not specified or characterized

Shock: Not specified or characterized

MTBF: Not specified or characterized

PCI Express: GEN-1 (2.5 Gb/s)

Voltages Required: +3.3V only

Power: 0.293 amp measured @ 3.3V

Size: 74 mm x 128.7 mm

PCB Thickness: 1.57mm / 0.062" +/-10% as per standard

PCBs

Weight: 53 grams

ORDERING INFORMATION

7259: Single 10/100/1G Ethernet out front-panel. XMC 1-lane PCI Express. Based on Intel i210 MAC/PHY controller.

9236: Technobox P/N 7259 with Conformal Coating

Technobox[®], inc.

Technobox, Inc.

154 Cooper Road, Suite 901
West Berlin, NJ 08091

Phone: 856-809-2306 • **Fax:** 856-809-2601

Email: sales@technobox.com

Website: www.technobox.com